

**MANITOBA METIS FEDERATION – MATRIX  
SOLUTIONS INC. PARTNERSHIP**

**INDIGENOUS CONSTRUCTION MONITORING**

**WEEKLY REPORT**

**SPREAD 8**

**OCTOBER 22<sup>ND</sup> TO OCTOBER 27<sup>TH</sup>**

## 1. PURPOSE OF THIS REPORT

The report is a weekly summary of the daily reports submitted by the Indigenous Construction Monitors that are working on spread eight. The social and cultural findings have been tabulated with locations and mitigation measures below. A summary of the construction activities has been summarized for the weeks of October 22<sup>nd</sup> to October 27<sup>th</sup>, 2018.

### Social and Cultural Features

Field Observation	# of occurrences	Description and Mitigation Measures	Mitigation Status	Further Action Required (Yes/No)
Traditional Use Area (hunting, fishing, gathering, trapping)	N/A			
Rock Formations (rocks of significance, tipi rings, etc.)	N/A			
Artifacts	N/A			
Bones	N/A			
Potential Gravesites	N/A			

### Environmental Features

Field Observation	# of occurrences	Description and Mitigation Measures	Mitigation Status	Further Action Required (Yes/No)
Medicinal or Cultural Plants	N/A			
Aquatic Life	N/A			
Animal Observations or Burrows	N/A			
Bird Nests	N/A			
Trees (Red Willow)	N/A			
Wetlands	N/A			
Watercourse Crossing	N/A			

## Additional Observations and Summary of Activities or Concerns

On October 22<sup>nd</sup>, slips, trips, falls, wide loads on the number 2 highway, spotter, tag lines, flaggers, congested work sites, wildlife, distracted driving, fatigue, farm equipment on roads, semis with long loads on grid roads, dusty gravel roads; Plus 8, clear skies, nice warm day to work; Fine clean and bleach when entering new R.M, or land owner requested wash; SF 8, oak creek crossing, side booms lowering in pipe, crews in the trench guiding the operator to line the pipe up with the other pipe that is already sitting in the trench, crews also grinding ends of the pipe to remove any rough surfaces, two workers are heating up the pipe with a tiger torch where the pipe will be welded, welders are also on sight and in the trench; SF 28, east side, lowering in crew lowering in the pipe; SF 30, east side, semi with boom attachment loading scrap pieces of pipe onto the back of his trailer; SF 32, north side, lowering in crew lowering in the pipe; SF 36, west side, boring machine on sight boaring under the road to the east side; SF 37, north side, boring machine on sight boaring under the road to the south side; SF 38, south side, excavator digging out trench where pipe will be laid close to the road, a dozer is then pushing that dirt off to the side of the ROW, the excavator is also loading some of the dirt into the back of a rock truck; Work forecast: Continue to monitor wetland habitats and traditional areas, monitor construction.

On October 23<sup>rd</sup>, slips, trips, falls, wide loads on the number 2 highway, spotter, tag lines, flaggers, congested work sites, wildlife, distracted driving, fatigue, farm equipment on roads, semis with long loads on grid roads, dusty roads; Plus 9, fairly warm day, a little smokey at the end of the day driving back to Brandon; Fine clean and bleach when entering new R.M, or land owner requested wash; Kick Off, dozers pushing topsoil back onto the ROW, almost looks like nobody was there; SF 10, east side, trenching machine trenching the ditch heading east; SF 11, east side, trenching machine trenching the ditch heading east; SF 22A, semi unloading dozer on the road, flaggers are being used to hold and let traffic through; SF 30, west side, three excavators and one dozer backfilling the pipe, we then signed onto the foreman's tailboard; SF 35, south side, one excavator in the trench moving dirt out of it, crews attempting to pump water out of the trench but the generator that sucks the water in is not starting, sierra hydrovacating eventually came and sucked up all the water; SF 36, west side, boring machine on sight boring under the road to the east side; SF 38, south side, excavator moving soil making more room to drive on the ROW, two side booms lifted up a length of pipe and moved it close to the trench, helpers put wood chinks under the pipe to prevent it from rolling away; Work forecast: Continue to monitor wetland habitats and traditional areas, monitor construction.

October 24<sup>th</sup>, slips, trips, falls, wide loads on the number 2 highway, spotter, tag lines, flaggers, congested work sites, wildlife, distracted driving, fatigue, farm equipment on roads, semis with long loads on grid roads, dust on gravel roads; Plus 14, nice warm day clear skies; Fine clean and bleach when entering new R.M, or land owner requested wash; SF 9, north side, lowering in crew lowering in the pipe, at the end of

the day there were excavators backfilling the pipe; SF 12, east side, three excavators digging dirt out of the trench, one dozer pushing dirt on the ROW smoothing it out SF 12, west side, one excavator was digging dirt out of the trench, the helper has a special measuring tool to measure the depth of the trench; SF 20, west side, one hydro vac on sight pumping water out of the trench; SF 29, west side, one excavator backfilling the pipe; SF 29, east side, two excavators backfilling the pipe, one dozer pushing dirt on the ROW; SF 38, north side, boring underneath the road taking place, snow fencing and metal pegs are placed around the open ditch to prevent anyone from walking into it, the area is very congested so there were flaggers on each side of the road holding SLOW signs, badger daylighting pumped water out of open ditch were boring took place, both workers were wearing the required PPE including face shield, hearing protection, hard hat, gloves, boots, another hydro vac showed up and hydrovaced where there was a buried hydro line, the hydrovacating didn't begin until a Manitoba hydro worker showed up on sight; SF 39, west side, boring machine on sight boring underneath the road to the east side; Work forecast: Continue to monitor wetland habitats and traditional areas, monitor construction.

October 25, 2018, slips, trips, falls, wide loads on the number 2 highway, spotter, tag lines, flaggers, congested work sites, wildlife, distracted driving, fatigue, farm equipment on roads, semis with long loads on grid roads, dusty gravel roads; Plus 12, very nice warm day, clear skies, very little wind; Fine clean and bleach when entering new R.M, or land owner requested wash; SF 2, east side, four dozers and two excavators pushing dirt back onto the ROW, the excavators are on top of the piles moving the dirt onto the centre of the ROW so the dozers can push it; SF 22B, west side, lowering in crew lowering in the pipe, crews putting wooden skids in the trench where the pipe is; SF 28, west side, lowering in crew lowering pipe into the ground, Apple's on sight doing ultra sounds on the pipe, semi parked on the road to load a dozer, flaggers were used to hold any traffic; SF 38, south side, lowering in crew lowered the pipe into the trench, crews then attached the end of the pipe to the end of the directional driller and the directional driller then pulled the pipe underneath the road to the north side; SF 38, north side, hydrovacating took place in the trench as the pipe was being pulled through underneath the road, two excavators had their buckets pushed up against the directional driller to keep it from moving forward under the pressure of the pipe; Work forecast: Continue to monitor wetland habitats and traditional areas, monitor construction.

October 26<sup>th</sup>, slips, trips, falls, wide loads on the number 2 highway, spotter, tag lines, flaggers, congested work sites, wildlife, distracted driving, fatigue, farm equipment on roads, semis with long loads on grid roads, dusty gravel roads, ear protection if close to hydro vac, thick fog; Plus 8, a little Smokey out today, not much wind, nice calm day, thick fog this morning; Fine clean and bleach when entering new R.M, or land owner requested wash; SF 9, west side, boring machine on sight boring underneath the road to the east side; SF 20, east side, lowering in crew lowering pipe into trench, ROW is very wet and muddy; SF 32, north side, one dozer pushing dirt to the side of the ROW, making more room for equipment and vehicles to get through; SF 32, south side, lowering in crew lowering the pipe into the ditch; Continue to monitor wetland habitats and traditional areas, monitor construction. SF 35, north side, excavator scrapping mud

out of the trench, loading that mud into the back of a rock truck; SF 35, south side, one side boom lifted the end of the pipe that is welded together and crew members built up the skid pile underneath it so the pipe is raised higher; SF 41A, west side, boring machine on sight boring underneath the road to east side; SF 43, south side, one excavator digging dirt out of the trench and putting it on the ROW, another excavator is then moving that dirt to the south side of the ROW;

October 27<sup>th</sup>, slips, trips, falls, wide loads on the number 2 highway, spotter, tag lines, flaggers, congested work sites, wildlife, distracted driving, fatigue, farm equipment on roads, semis with long loads on grid roads, thick fog in the morning; Plus 5, cloudy, not to cold outside, very thick fog this morning; Fine clean and bleach when entering new R.M, or land owner requested wash; SF 33, west side, tie in crew tying in the pipe; flaggers on the road only letting one vehicle through at a time down the road because of how slippery and muddy the gravel road is it would not be safe if two vehicles met each other; SF 34, west side, tie in crew tying in the pipe; SF 35, south side, sandblasters sandblasting the pipe, coating crew also came and coated the weld on the pipe; SF 41A, west side, directional driller drilling underneath the road to the east side, Midwest hydrovac is pumping water out of the ditch on the west side, KP 979+400; SF 41A, east side, crews attached a bigger bit to the end of the directional drill, the directional drill then pulled that bigger bit back under the road to the west side then he drilled through again to the east side; Work forecast: Continue to monitor wetland habitats and traditional areas, monitor construction.

## Photos of Sites Visited & Topics Discussed This Week

October 22, 2018



SF 8, oak creek crossing, photo facing north east, pipe being lowered into the trench.



SF 8, oak creek crossing, one crew member giving signals to the boom operators to line the pipe up with the pipe that's already in the trench.



SF 8, oak creek, pipe lined up, two crew members heating up the pipe with tiger torches to prepare for the welding.



SF 38, photo facing east, excavator digging dirt out of trench, one dozer pushing that dirt to the side of the row. Lots of water in the trench.

## October 23, 2018



SF 30, photo facing east, backfilling taking place.





SF 35, photo facing west, excavator moving out dirt, crews attempting to pump out water.



SF 38, photo facing south east, excavator moving soil, side booms moving pipe closer to trench.

**October 24, 2018**



SF 35, photo facing west, excavator loading dirt from the trench into the back of a rock truck.



SF 38, photo facing north west, boring taking place.



SF 38, hydro vac pumping out water from open ditch, you can also see the boring drill bit just above the water.

### October 25, 2018



SF 28, photo facing west, lowering in crew lowering in pipe, APPlus doing ultra sounds on the pipe.



SF 38, photo facing south east, a picture of the drill bit that was used to boar under the road with the pipe attached.



SF 38, photo facing south, lowering in crew getting ready to lower in pipe and attach it to the drill bit.



SF 38, photo facing west, pipe is under the road being pulled by the directional driller.

October 26, 2018



SF 20, photo facing east, lowering in crew lowering in pipe, ROW is very muddy and wet.

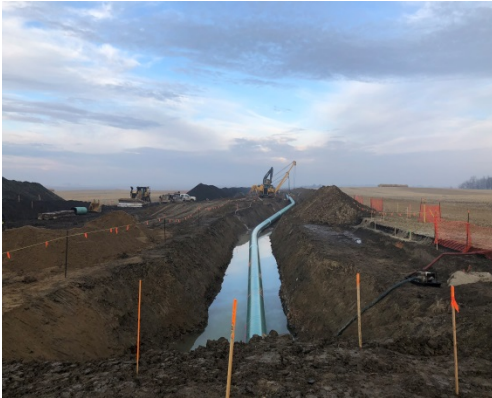


SF 35, photo facing south east, side boom raised pipe and crew members built up skid pile higher.



SF 43, photo facing east, excavators moving dirt out of the trench to the side of the ROW.

October 27, 2018



SF 34, photo facing west, tie In crew tying in the pipe.



SF 35, photo facing south east, sand blasters sand blasting the pipe, coaters came shortly after.

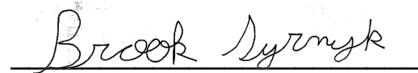


SF 41A, photo facing west, hydro vac pumping out water while directional drill drills.



SF 41A, photo facing north west, drill bit coming out on the east side of the road.

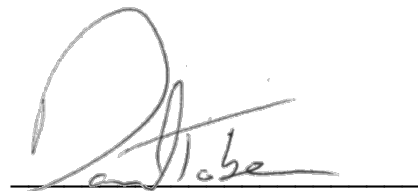
**APPROVALS**



Brook Syrnyk  
Construction Monitor

November 14, 2018

Date



Daniel Tober  
Senior Environmental Scientist

November 14, 2018

Date